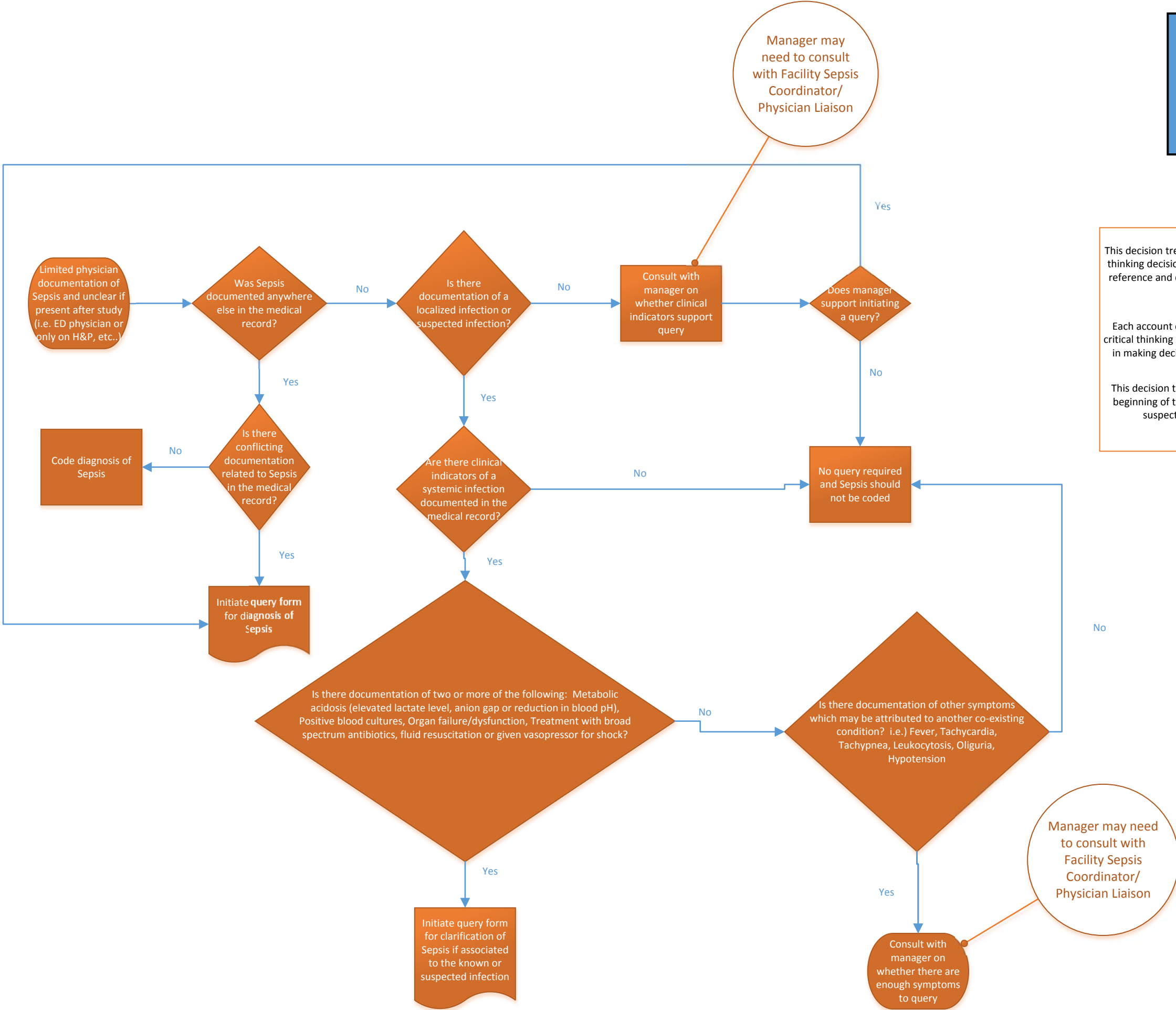


Sepsis Decision Tree

May 2018



This decision tree is being provided as a reference document for coders to use in their critical thinking decision process on when to launch a query for Sepsis. This document is not a final reference and does not take the place of any previously coding published guidance or HCA/Parallon policies and procedures.

Each account can have clinical and documentation variables. The coder must utilize their critical thinking skills, understanding of the disease process and coding guidelines/convention in making decisions on when there is sufficient documentation to code Sepsis and when a query should be initiated for further clarification.

This decision tree should be utilized when there is limited documentation for Sepsis at the beginning of the patient's stay, there is no continued documentation of Sepsis, or when a suspected Sepsis diagnosis has not been confirmed at the time of discharge.